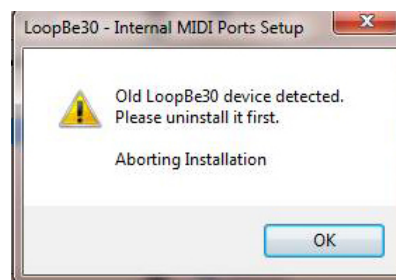


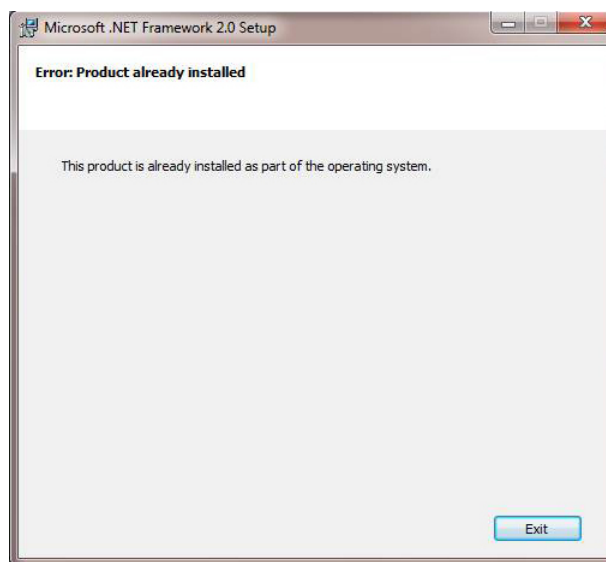
Chirp Virtual MIDI Keyboard Controller Windows and Mac Installation Guide



on your PC. Just click **OK**:



The next warning usually appears if you are running Windows 7 - again, it's OK and just click **Exit**.



Windows Installation

Minimum Computer Requirements

Chirp's computer requirements are driven by the Adobe AIR Framework. Here's what you'll need:

- 2.33GHz or faster x86-compatible processor or Intel® Atom™ 1.6GHz or faster processor for netbooks
- Microsoft® Windows® XP Home, Professional, or Tablet PC Edition with Service Pack 3; Windows Server® 2003; Windows Server® 2008; Windows Vista (including 64-bit editions) with Service Pack 2; or Windows 7 or later.
- 512MB of RAM (1GB recommended)
- LoopBe30 MIDI Loopback Driver (included)
- Audio input/output device (Chirp works with an internal sound card or external audio interface.)

Downloading the Installer File

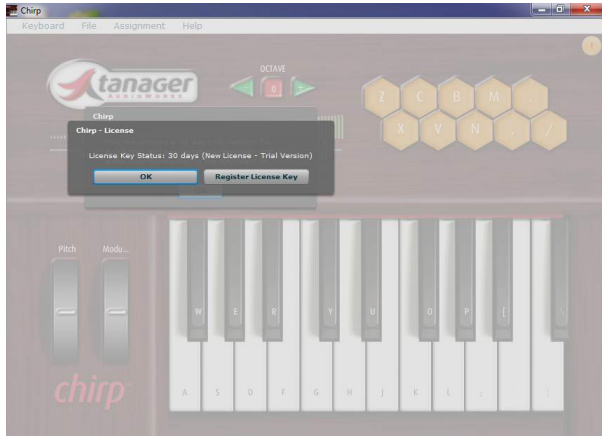
Download the appropriate Chirp Windows installer file from the **Downloads** tab at www.tanageraudioworks.com.

Installation Process

Double-click and extract the installer file (ChirpWinInstaller.exe.) The Chirp for Windows installer file installs several components, including a copy of the excellent LoopBe30 Multi-port MIDI Loopback Driver, the Adobe AIR Framework (required for Chirp to operate), The Microsoft .NET Framework and the C++ Visual Studio Redistributable file, and the Chirp application itself. (A MIDI Loopback driver is a piece of software that directs the MIDI output of one program to the MIDI input of another.) Once installed, Chirp will load and provide 30 days of unrestricted use in Trial Mode.

You may see some warnings pop up. The first relates to a previous installation of the LoopBe30 MIDI Loopback driver - if you see this prompt, ignore it. It just means you already have a copy of LoopBe30

If you decide to purchase Chirp, go to our Webstore at www.tanageraudioworks.com and click on the **Store** tab. Purchase Chirp and your license key will be EMAIL'd to you in a few minutes. Click on the **Keyboard** menu and then **License Key**. Enter your License Key as show on the next page. Chirp will unlock. You can use Chirp on any computers you own - each will need to be unlocked with your License Key. The latest installer files are always available on the **Downloads** page at www.tanageraudioworks.com.

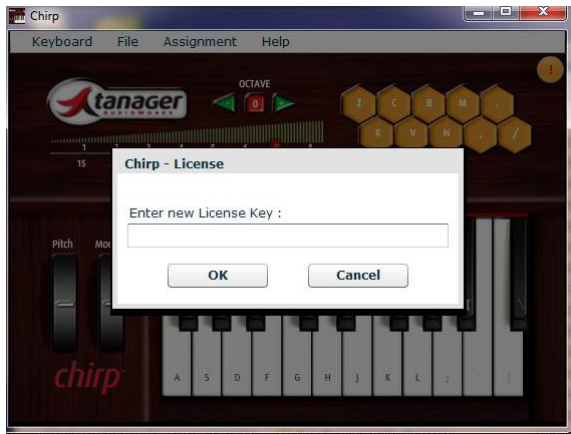


Making Sure Everything is Working OK

You'll know you have everything installed properly if you run Chirp, click on **File -> MIDI Setup** and in the 1st drop down menu (Output Device) you see the Microsoft GS Wavetable SW Synth and some entries called "X. Internal MIDI." If you select the Microsoft SW Synth, you should be able to hear piano sounds if you play the labeled computer keyboard keys. Just a note - setting this to any of the Internal MIDI ports directs the MIDI notes to any software application which has its MIDI Input set to the same input port number. This is the setup you'll use with your DAW or sequencer. Refer to the Chirp manual installed in your Program Files -> Chirp folder for more details on setup with popular DAW and music applications.

A Windows side note - for some strange reason, some Windows PC's have a slight delay when you first start playing notes after you load Chirp - it goes away after you play a few notes. We had a team of scientists look at the issue and the report back was "beats the hell out of us." Not to worry.

Check out the help documentation available on our website to use Chirp with your favorite DAW or Soft Synth application.



Mac OS X Installation

Minimum Computer Requirements

Chirp's computer requirements are driven by the Adobe AIR Framework. Here's what you'll need:

- Intel Core™ Duo or faster processor
- Mac OS X v10.6 or later
- 512MB of RAM (1GB recommended)
- Audio input/output device (Chirp works with an internal sound card or external audio interface.)
- MIDI Sound Source or built in Quicktime MIDI Synthesizer
- Any Digital Audio Workstation, synthesizer or sampler software capable of producing sound from incoming MIDI data

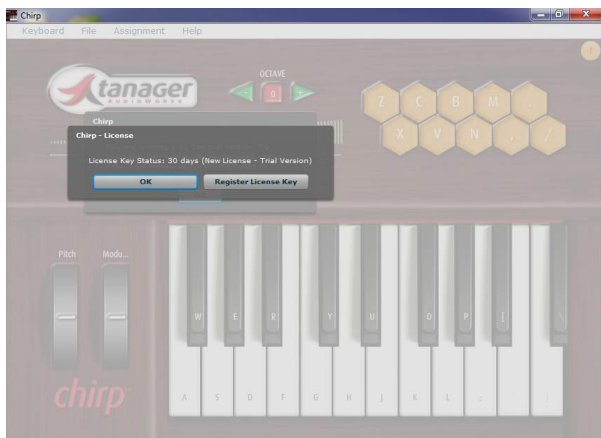
Downloading the Installer File

Download the Chirp Mac installer file from the **Downloads** tab at www.tanageraudioworks.com.

Installation Process

Double-click on the installer file (ChirpMacInstaller.app.) The Chirp for Mac installer file installs several components, including the Adobe AIR Framework (required for Chirp to operate.)

Once installed, Chirp will load and provide 30 days of unrestricted use in Trial Mode. If you decide to purchase Chirp, go to our Webstore at www.tanageraudioworks.com and click on the **Store** tab. Purchase Chirp and your license key will be EMAIL'd to you in a few minutes. Click on the **Keyboard** menu and then **License Key**. Enter your License



Key as shown below. Chirp will unlock. You can use Chirp on any computers you own - each will need to be unlocked with your License Key. The latest installer files are always available on the **Downloads** page at www.tanageraudioworks.com.

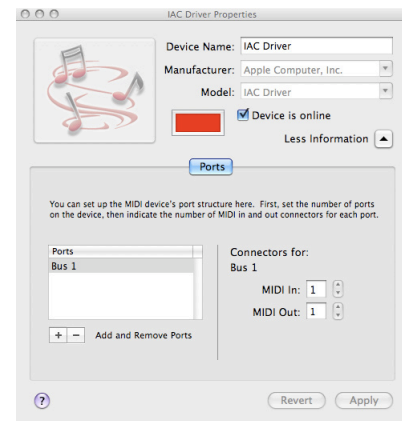


Making Sure Everything is OK

Chirp Mac should work from the Mac keyboard once its loaded. The Mac automatically connects Chirp to the built-in Quicktime MIDI Synth. Press the keyboard keys and you'll hear a piano sound - press the drum trigger pad keys (z,x,c,v, etc) and you'll hear drums. Simple as that.

To route the MIDI data to your favorite DAW or sequencer program, Chirp utilizes the Mac's built-in IAC Driver found under the Audio-MIDI Setup Utility. Be sure to open this utility, double click the IAC Driver icon in the MIDI windows and then check the box saying **Device is Online**. Chirp will show up as "Bus 1" in your music software applications - be sure to set Chirp's MIDI Out to "Bus 1" as well. This can be found under the **File -> MIDI Setup -> Output Device** menu.

One more thing - under **Universal Access** in the **System Prefer-**



ences menu on your Mac, be sure to check the box at the bottom of the dialog that says **Enable access for assistive devices**. This option is required in order for the **Send Notes Always** capability in Chirp to operate properly.

Also, as you launch Chirp, every now and then Adobe AIR will check to see if there is a newer version when you launch Chirp - and if it finds one it installs it (similar to the Adobe Flash player.) This is quick and painless.

Computer Keyboard Nuances

A bit about computer keyboards. Unless you have a fancy gaming keyboard where every key is wired independently, most computer



keyboards are wired in a row/column switch matrix - there are certain key combinations that may not work together (hence some chords you won't be able to play.) This is completely dependent on the keyboard manufacturer and beyond the scope of what we can help with.

Technical Support

If there are any issues getting Chirp going, send us an EMAIL at support@tanameraudioworks.com and we'll get you going. Check out the various support docs on our website as well.

Check out the help documentation available on our website to use Chirp with your favorite DAW or Soft Synth application.