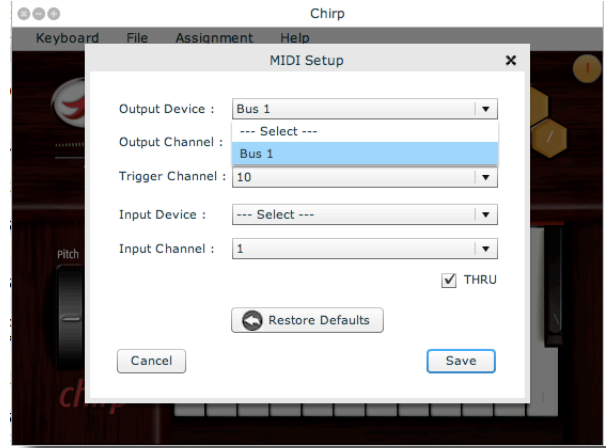
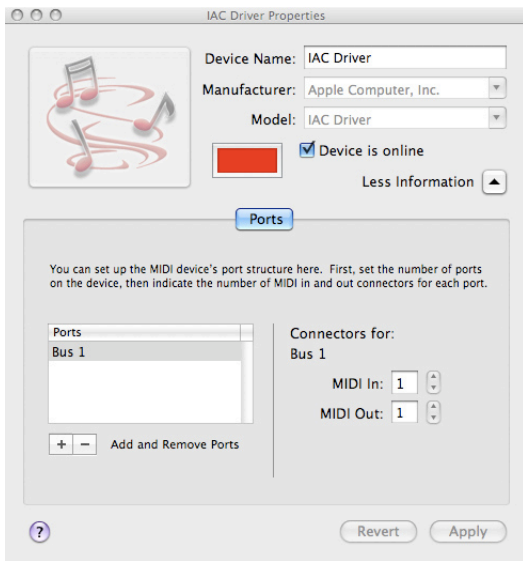


Chirp Virtual MIDI Keyboard Controller Pro Tools Setup Guide - Mac OS X



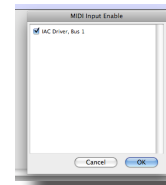
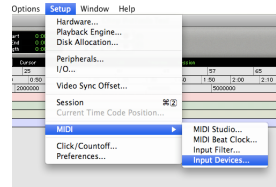
This document covers how to set up Pro Tools to utilize the Chirp Virtual MIDI Keyboard Controller for Mac OS X.

Step 1 -Set up your Mac to use the IAC Driver internal MIDI Bus. Load the **Audio-MIDI Setup Utility** (found under the **Applications -> Utilities** folder. Check the box labeled “**Device is online.**” This creates an internal “MIDI cable” you’ll send data from Chirp to Pro Tools on.



In Chirp, select **File -> MIDI Setup** and in the **Output Device** drop-down menu choose **Bus1**. This tells Chirp to send the MIDI output over that virtual MIDI cable called Bus1 rather than the Quicktime built in synth that is on by default when you first load up Chirp. If you try playing Chirp now - you’ll hear nothing - because we need to route that MIDI data to a sound source - or in this case Pro Tools MIDI or Instrument track.

In Pro Tools, go to **Setup -> Input Devices**. Make sure the **IAC Driver Bus1** is checked.



Create a MIDI and AUX Track, or an Instrument Track. Make the input to the MIDI or Instrument Track the IAC Driver Bus 1. If you created a MIDI track, route the output to an AUX track with a soft synth loaded, and if you created and Instrument track insert a soft synth. Click on Chirp and play the keyboard - you should hear the synth playing.

One feature to be aware of - in the Chirp **Keyboard -> Preferences** menu, there is a box called “**Send Notes Always.**” Checking this allows you to keep your focus on Pro Tools and still have Chirp play its notes without clicking over to it. The **CAPS LOCK** key acts as an on/off control for Chirp’s MIDI output when using it this way. (This is a feature of Chirp Build 1.2 - email us if you need to update your version.)

If you need additional assistance, feel free to EMAIL us at support@tanageraudioworks.com or call our Technical Support line at 888-766-4967 Ext 2 (toll free in the US and Canada) or 973-895-1874 Ext 2 elsewhere in the world.