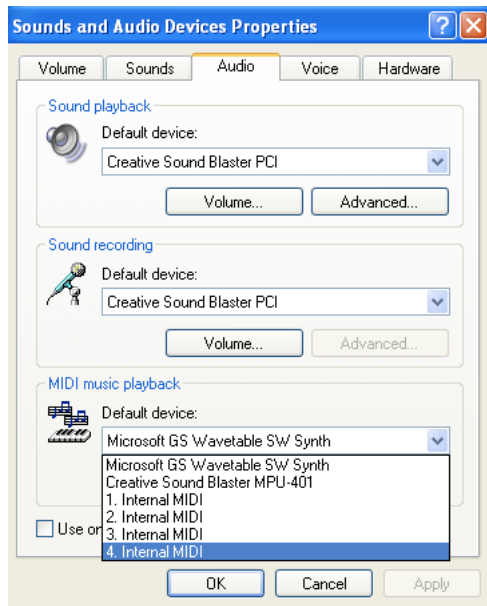


Microsoft GS Wavetable Synth Issues

SongFrame was designed to utilize a variety of sound sources to hear the various chord, melody and drum sounds play. Windows supplies a free GS capable MIDI sound source called the Microsoft GS Wavetable Synth with every Windows installation. This synth is part of DirectX. Every now and then we will receive word from a customer that they were unable to find this installed on their system. This document attempts to shed light on where to look for the GS Synth and if not found, how to get it back on the system.

First - to make sure you have the GS Synth installed in Windows XP, go to **Control Panel -> Sounds and Audio Devices** and click on the **Audio** tab.

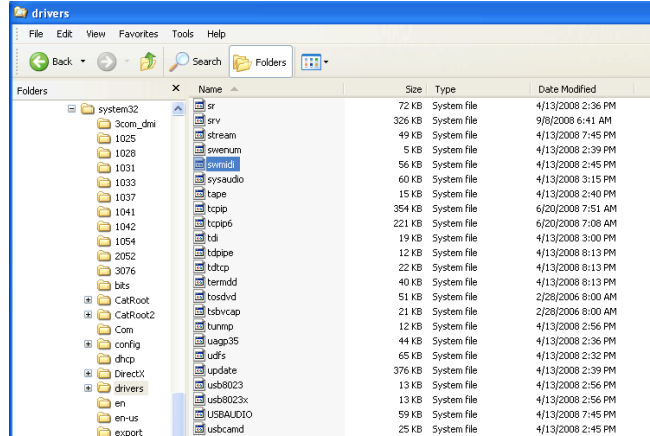


If it has been successfully installed, then it should appear in the drop-down menu for MIDI devices. (All your available MIDI ports should show up here - if you are not seeing some of the devices it might be because you exceeded Window's MIDI port limit. See our document on Windows and MIDI Port limits available at: www.tanageraudioworks.com/support.)

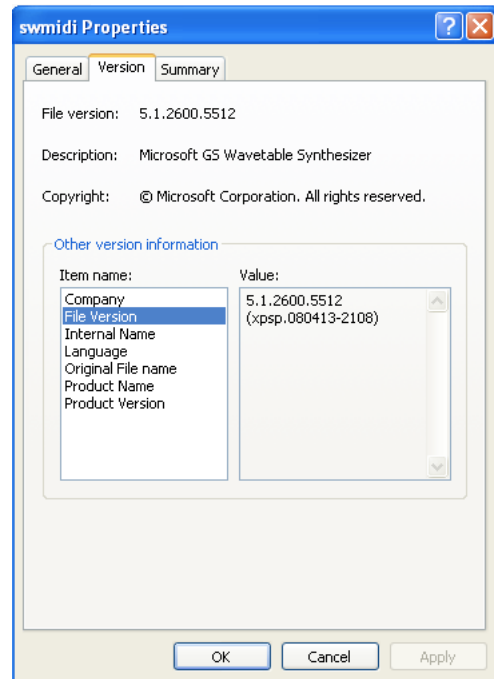
We've found a few situations where the Microsoft GS Synth won't appear.

Some motherboards require you to enable the AC97 sound support. You might need to look at the BIOS settings to get at this. (AC97 is the Intel audio codec used on many motherboards and sound cards. A good explanation can be found at <http://en.wikipedia.org/wiki/AC97>.)

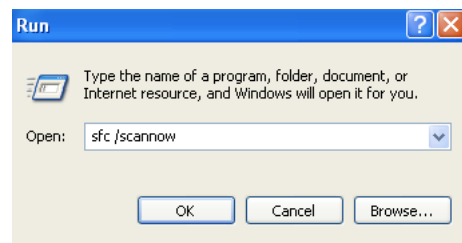
If this is not the issue, then it is possible the file or registry entry was damaged somehow. The driver for the Microsoft GS Wavetable Synth is called `swmidi.sys`, and can be found under the `C:\Windows\system32\drivers` folder as shown below.



Right-clicking properties on our XP installation showed:



If you do not see the file, try using the System File Checker that comes with XP. Click on Start -> Run and type `sfc /scannow` as shown:



You might need your Windows installation CD during the scan. Here's what the Microsoft website says about SFC:

“System File Checker gives an administrator the ability to scan all protected files to verify their versions. If System File Checker discovers that a protected file has been overwritten, it retrieves the correct version of the file from the cache folder (%Systemroot%\System32\Dllcache) or the Windows installation source files, and then replaces the incorrect file. System File Checker also checks and repopulates the cache folder. You must be logged on as an administrator or as a member of the Administrators group to run System File Checker. If the cache folder becomes damaged or unusable, you can use the `sfc /scannow`, the `sfc /scanonce`, or the `sfc /scanboot` commands to repair its contents.”

(More info on SFC can be found at <http://support.microsoft.com/kb/310747>.)

Another method of making the Microsoft GS Wavetable Synth “re-appear” on your system is to download the update to DirectX available at: <http://www.microsoft.com/downloads/details.aspx?FamilyID=ea4894b5-e98d-44f6-842d-e32147237638&DisplayLang=en>.

Theoretically installing the latest Service Pack should also put the file back on your system.