

SongFrame Songwriter's Toolkit Software Installation Guide for Windows XP/Vista - Demo Version

Welcome to the SongFrame Songwriter's Toolkit for Windows XP/Vista Demo Version Installation Guide. This guide contains all the information you'll need to get up and running quickly with SongFrame Demo.

The SongFrame demo version is a fully functional version of SongFrame restricted to 14 days only. Click on the link on the Tanager AudioWorks website (or go to <http://song.tanageraudioworks.com/machform/view.php?id=3>) to get the Demo Registration form. Once you fill out the demo registration form, you'll be EMAILED a link to download the demo installer.



Note - if you have difficulties seeing the two words to type at the bottom of the form, click the loop icon to the right of the text entry box - you'll get new words to enter.

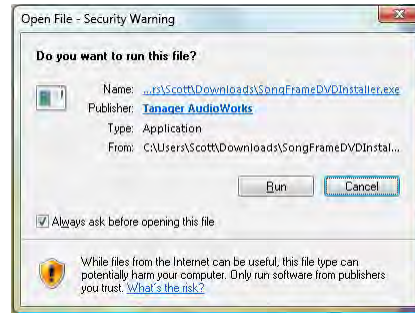
While you use the demo, you can explore every aspect of the product. The installation procedure only varies from the purchased product in 2 ways. There is no serial number to enter, and there is no authorization required to run it in Demo mode. If you purchase the full product, you can click on the Authorize button and follow the instructions to fill out the Registration/Authorization form with the serial number you received after purchase. We will then send you an unlock code. **No un-installation is required.** SongFrame will take up approximately 250M of space on your hard drive (which includes a folder for the free 4Front VST plug-in's we supply.)

Minimum Computer Requirements

- Intel® Pentium® III 1GHz or faster processor
- Windows XP with Service Pack 2; Windows XP Tablet PC Edition; or Windows Vista® Home Premium, Business, Ultimate; Microsoft® Windows® 2000 with Service Pack 4; Windows 2003 Server
- 512MB of RAM
- 1024 by 768 resolution display - actually the bigger the display, the better experience you'll have with SongFrame.

- Audio input/output device (SongFrame will work equally well with an internal sound card or most external audio interfaces.)
- (Optional) MIDI Input and Output device OR many VST Plug-in Instruments. The program can use the built in Microsoft GS Wavetable Synth as its primary MIDI sound source as well.

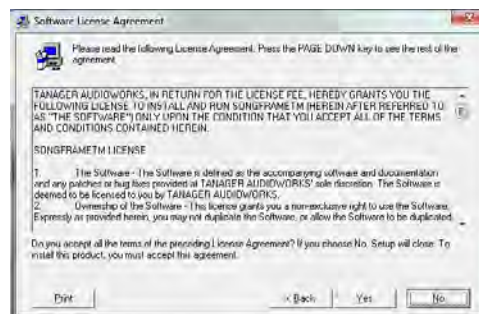
SongFrame installs a MIDI Loopback Driver (LoopBe30), Adobe AIR, the Microsoft .NET Framework 2.0, the Microsoft Visual C++ Redistributable Package and its own program files. Extract or Unzip the installer file you downloaded from the Tanager AudioWorks website. Double click on the **SongFrameDemoInstaller.exe** file. You will see this message - click Run.



The main Installer Screen will appear. Click Next.



Next, read and accept the License Agreement to continue. Click Yes.

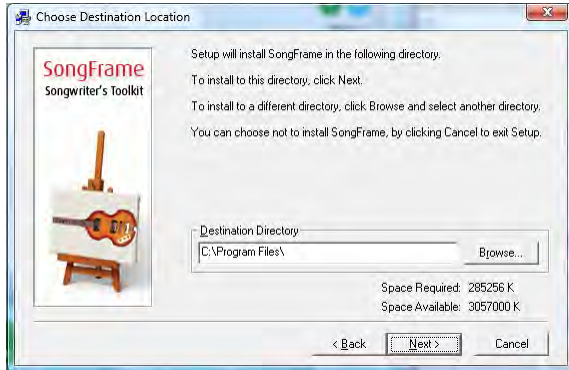


The installer is set up to put SongFrame in the **C:\Program Files\Song-Frame** directory as a default. For best results - please stick with the C:\Program Files directory for your installation. Click **Next** to continue.

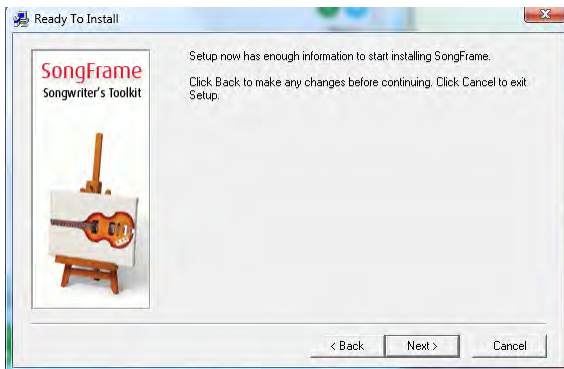
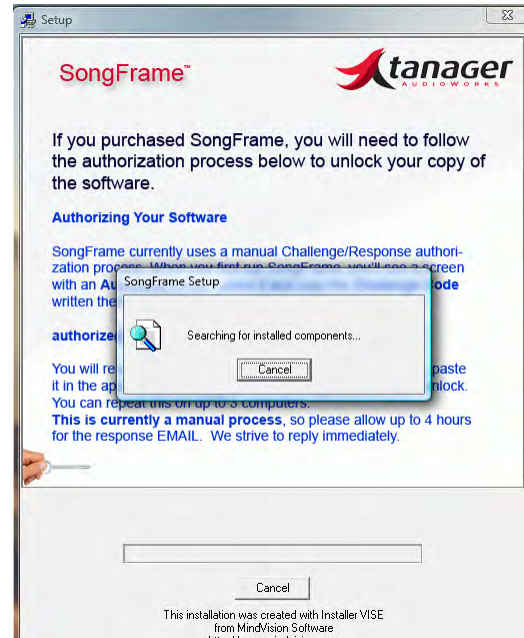
Once the files have been downloaded, SongFrame checks to see what is already installed on your computer and then begins the installation.

You will see this screen telling you SongFrame is ready to begin the installation.

There are a few Getting Started screens you'll see as you wait. Don't worry if you can't read them fast enough - all the information on them is contained in the User Guide.

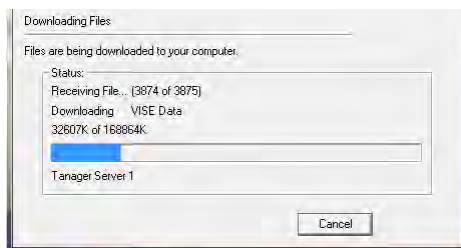


SongFrame will now phone home and download the latest revision of the program from the Tanager Server - the file size is roughly 170Mb. Please make sure you are on an adequate high speed connection and have allotted enough time for this step.



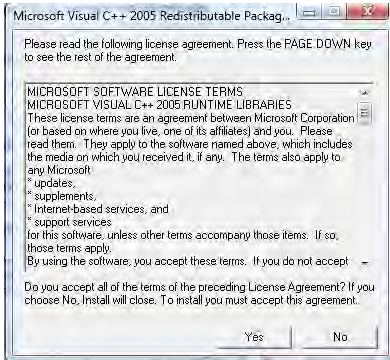
The installer will check if your system has Adobe AIR installed on it - if not it will take you through the installation process for that. If you already have it, you'll see the screen below - click **Close** to continue.

When the download begins, you'll see this progress screen. After the download happens - it may sit on this screen for a bit, so please be patient.

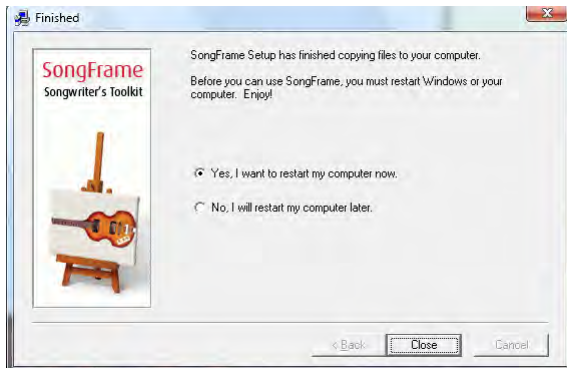


You may also see a screen asking if it is OK to install the LoopBe30 software from www.nerds.de/ Daniel Schmitt. It is! This is a licensed component of SongFrame, and it is required to use the program.

Last - SongFrame requires the Microsoft Visual C++ Redistributable package installed - click **Yes** when you reach this screen.



Your installation is now complete - you'll need to **restart your PC** again in order to begin using SongFrame.



After reboot - run the SongFrame Demo. You'll see the startup screen - Click Demo to run the application.

If you decide to buy the product - just purchase the download in the Tanager AudioWorks Store. When the screen showing your downloadable files appears, don't download anything. Just click the Authorize button and send the Challenge Code along with the serial number you received to authorize@tanageraudioworks.com, and you'll receive the unlock response code. Easy as that.

Setting Up SongFrame Windows

Once SongFrame has been installed and the application started, the "setup" steps are to setup Audio and MIDI (and your VST instruments if you plan on using these.) Once those are setup (and unless they are changed) SongFrame will remember them for now on (so you won't have to worry about them again.) After the hardware and sounds are configured, the next step will be to assign some Song Settings (song key, tempo, time signature, etc.) Finally - drag an empty SongBit into the Song Structure pane to begin. If you skip this step, SongFrame will yell at you and tell you that its a requirement to begin writing your masterpiece! If you actually click on the Help link in SongFrame when you first load it up, you can watch a quick movie about how to get started songwriting using the product.

Using Your 4Front Piano VST's

4Front VST Instruments (VSTi's)

SongFrame Windows installs 4 free VST Instruments during its installation - the 4Front Piano, EPiano, Rhodes Piano and Bass. (Some of you may want to use the MIDI Track as a Bass Composer, so this is why we supply that last one.) First, you need to be sure SongFrame knows where to find your VST Instruments. In the **Setup -> MIDI and Plug-In Setup -> Plug-In Setup** tab, click the **Add...** button and type in the path where your VSTi's are stored. We installed the 4Front VSTi's in **C:\Program Files\SongFrame\VST**, so type in that path. To use them, go to the **Setup -> MIDI and VST Setup -> Chord Track** tab or **Melody/MIDI Track** tab and checking the "Use Plug-In Instrument?" checkbox. Click the "Plug-In" drop down menu - find the 4Front VSTi you want to use. We set the chord track to use MIDI Channel 2 and the Melody/MIDI track to use Channel 1 by default, but you can change channels here if the VSTi you want to use requires a specific setting. These plug-in's have no settings, but if you like what you hear you should consider purchasing the full 4Front TruePianos product at <http://www.truepianos.com/>.

Note - SongFrame provides a tool to "spread" the sound of the chord notes in time for each chord played. This is particularly handy if you are using a Guitar VSTi and want the chords to sound like strums. Use the Note Spread By control under **Setup -> Chord Playback Settings**. The numbers you see there are actually Ticks (fractions of a beat) - where one tick in SongFrame is 1/960th of a beat.

The entire manual for SongFrame is built into the product via the Help menu and contains a pile of useful information about using SongFrame including animations and other tools to make you proficient in using the product. Please make use of it!

That's all folks - enjoy the demo version of the product. You can purchase the product as a direct download or packaged product from music retailers or via the Tanager AudioWorks Webstore at www.tanageraudioworks.com. If your dealer doesn't have it he can call us for the contact information for a distributor who carries it.

Technical support is available via EMAIL at support@tanageraudioworks.com or just call us on 888-SongWorks Ext 2 (888-766-4967) or direct at 973-895-1874 Ext 2.

Most importantly - download and review the SongFrame Windows Troubleshooting Guide at:

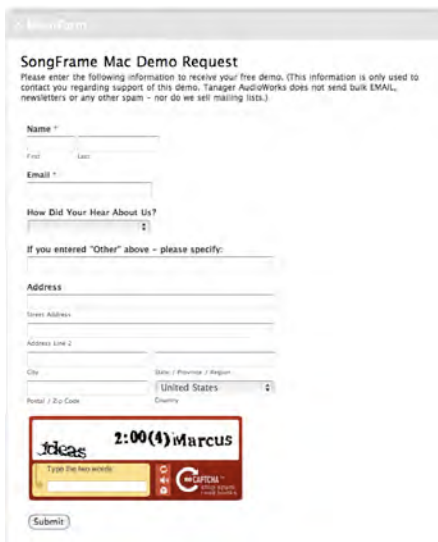
http://www.tanageraudioworks.com/Datasheets/SongFrame_Windows_Troubleshooting_Guide.pdf

This document is constatly updated with information to make sure you get the product up and running.

SongFrame Songwriter's Toolkit Software Installation Guide for Mac OS X - Demo Version

Welcome to the SongFrame Songwriter's Toolkit for Mac OS X Demo Version Installation Guide. This guide contains all the information you'll need to get up and running quickly with SongFrame Mac Demo.

The SongFrame demo version is a fully functional version of SongFrame restricted to 14 days only. Click on the link on the Tanager AudioWorks website (or go to <http://song.tanageraudioworks.com/machform/view.php?id=8>) to get the Demo Registration form. Once you fill out the demo registration form, you'll be EMAILED a link to download the demo installer.



Note - if you have difficulties seeing the two words to type at the bottom of the form, click the loop icon to the right of the text entry box - you'll get new words to enter.

While you use the demo, you can explore every aspect of the product. The installation procedure only varies from the purchased product in 2 ways. There is no serial number to enter, and there is no authorization required to run it in Demo mode. If you purchase the full product, you can click on the Authorize button and follow the instructions to fill out the Registration/Authorization form with the serial number you received after purchase. We will then send you an unlock code. **No un-installation is required.** SongFrame will take up approximately 130M of space on your hard drive.

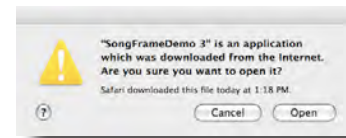
Minimum Computer Requirements

- PowerPC G4 1.8GHz or faster processor or Intel Core Duo 1.33GHz or faster processor
- Mac OS X v.10.4.2 or later
- 512MB of RAM; 32MB of VRAM
- 1024 by 768 resolution display - actually the bigger the display, the better experience you'll have with SongFrame.
- Audio input/output device (SongFrame will work with an internal sound card or external audio interface.)

- MIDI Input and Output device OR AU Plug-in Instruments.

Installing the Demo

When you click on the provided link, a compressed file called **SongFrameDemo.tar.gz** will be downloaded to your computer. Double click on this file in the Downloads folder and the SongFrameDemo.app file will be uncompressed inside your Downloads folder. Double click this file to begin the installation process. You will see a warning - it's OK to click **Open** at this point.



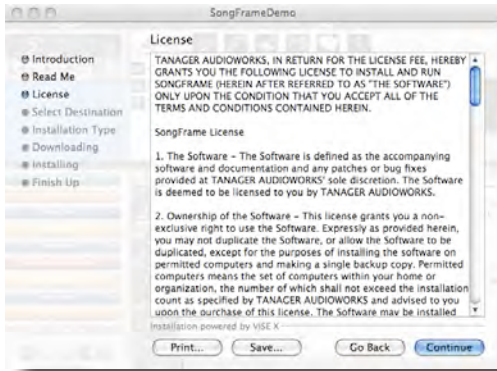
Next - you will see the demo splash screen:



Click **Continue**. The next screen contains some important release notes - please scroll down and review these before continuing. After scrolling all the way down, you'll be able to click **Continue**.

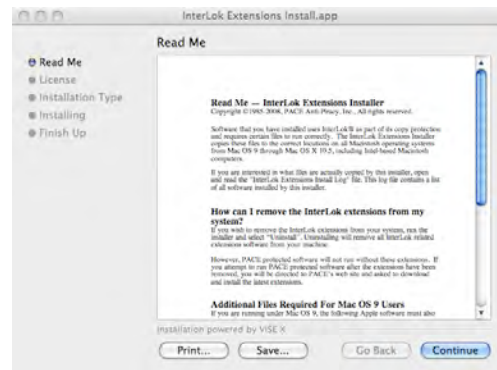
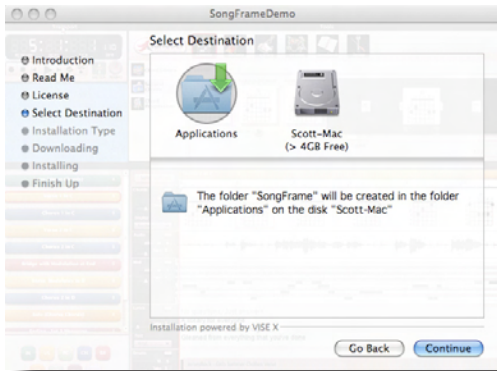


You must read and agree to the license agreement on the next page to continue with the installation.



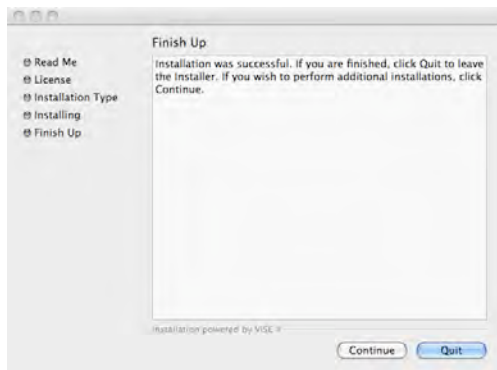
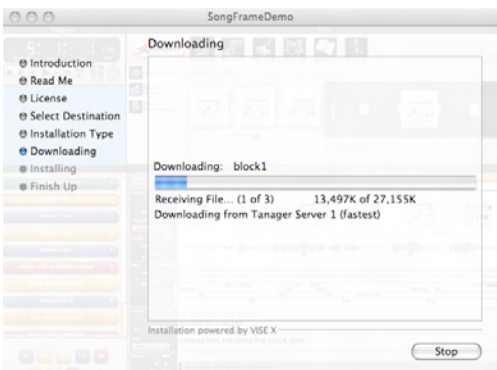
Next, choose the location to install your SongFrame Demo. The default selection is the **Applications** folder.

The last step of the process is the installation of the **Pace Interlok Extensions** - another required utility for SongFrame to operate.



After another information screen, the installer will begin downloading the files required to finish the installation. This process will take a few minutes since there is a total of 130MB of info to be downloaded. Be sure your internet connection speed is adequate.

When this finishes, you'll be presented with 2 "Finished" screens - the first is the completion of the Pace installation and the second completes the SongFrame Demo installation itself.



Next, the installation of the downloaded files begins. Once the main SongFrame files are downloaded, the installer looks for an existing installation of the **Adobe AIR Framework** and installs it if not found.

Please make sure to run SongFrame from the Applications -> SongFrame folder. If you try and create a Dock icon and launch from there - the program will not run properly.



If you decide to purchase SongFrame, you can do so without un-installing the demo. Just buy the downloadable version in the Tanager AudioWorks Webstore (via the “**Buy Now**” button on www.tanageraudioworks.com) and a serial number will be EMAIL'd to you. Click on the **Authorize** button when the demo first loads, and then click the **Copy Challenge** button. Paste this code into the appropriate field on the Authorization Form at <http://song.tanageraudioworks.com/authorize.html> along with your serial number and a Response Code will be EMAIL'd back to you. Paste this code into the appropriate box on the Authorize screen and your demo will open up - converting it to the full purchased version of the product.

Please consult the PDF manual (installed in your SongFrame folder under Applications) or built-in Flash Help to get started writing with SongFrame.