

SongFrame Songwriter's Toolkit Software Installation Guide for Windows - Download Version



Welcome to the SongFrame Songwriter's Toolkit for Windows XP/Vista Installation Guide. This guide contains all the information you'll need to get up and running quickly with SongFrame.

SongFrame will take up approximately 250M of space on your hard drive (which includes a folder for the free 4Front VST plug-in's we supply.)

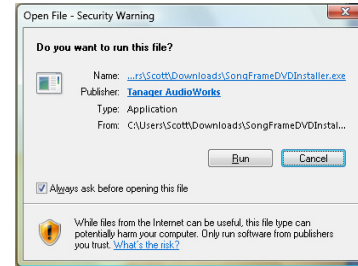
Minimum Computer Requirements

- 2.33GHz or faster x86-compatible processor or Intel® Atom™ 1.6GHz or faster processor for netbooks
- Microsoft® Windows® XP Home, Professional, or Tablet PC Edition with Service Pack 3; Windows Server® 2003; Windows Server® 2008; Windows Vista® Home Premium, Business, Ultimate, or Enterprise (including 64-bit editions) with Service Pack 2; or Windows 7
- 512MB of RAM (1GB recommended)
- 1024 by 768 resolution display - actually the bigger the display, the better experience you'll have with SongFrame.
- Audio input/output device (SongFrame will work with an internal sound card or external audio interface.)
- MIDI Input and Output device OR VST Plug-in Instruments.

SongFrame installs a MIDI Loopback Driver (LoopBe30), Adobe AIR, the Microsoft .NET Framework 2.0, the Microsoft Visual C++ Redistributable Package and its own program files.

Installation Process

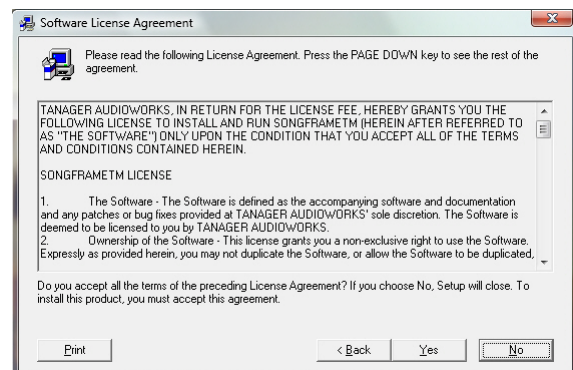
SongFrame is a relatively easy product to install. Extract or Unzip the installer file you downloaded from the web store. Double click on the **SongFrameInstaller.exe** file. You will see this message - click **Run**.



The main Installer Screen will appear. Click **Next**.

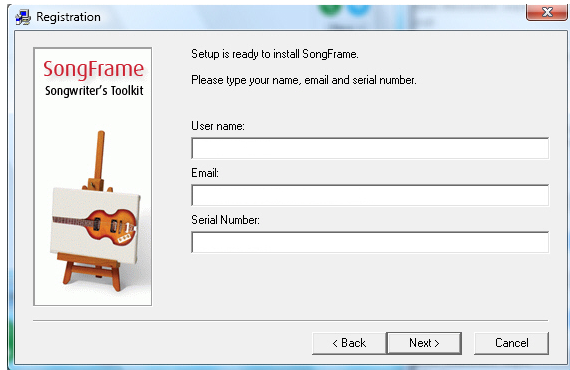


Next, read and accept the License Agreement to continue. Click **Yes**.

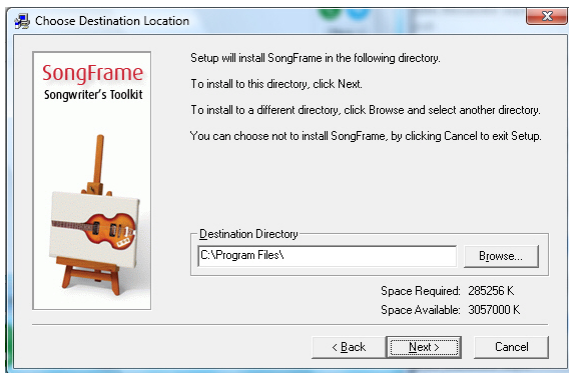


Enter your name, EMAIL address and the serial number you were EMAIL'd into the appropriate boxes.

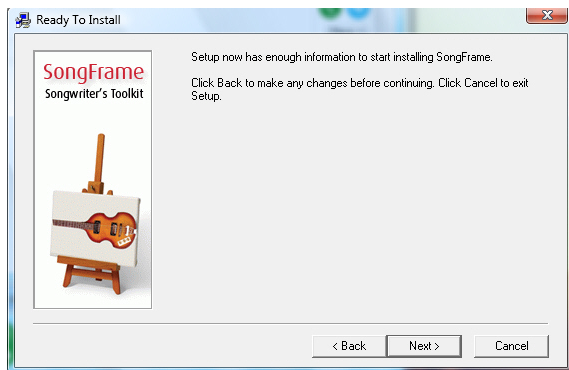
Click **Next** when this information is entered.



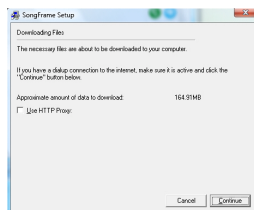
The installer is set up to put SongFrame in the **C:\Program Files\Song-Frame** directory as a default. If you want to change this location then do so here; otherwise click **Next** to continue.



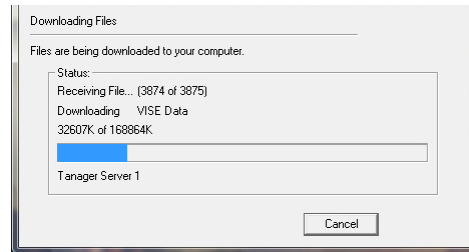
You will see this screen telling you SongFrame is ready to begin the installation.



SongFrame will now phone home and download the latest revision of the program from the Tanager Server - the file size is roughly 170Mb. Please make sure you are on an adequate high speed connection and have allotted enough time for this step. The downloader runs a check after each

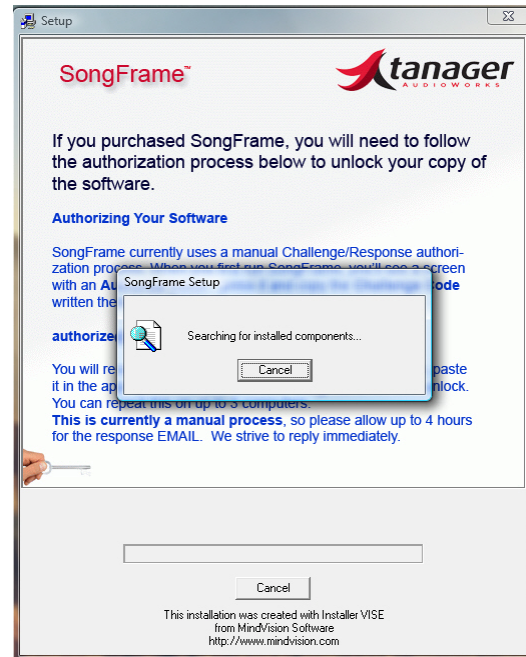


When the download begins, you'll see this progress screen. When the files are almost downloaded it may sit on this screen for a bit - be patient.



Once the files have been downloaded, SongFrame checks to see if you have a MIDI Loopback driver and a few other items (such as the Microsoft .NET 2.0 Framework installed on your PC.)

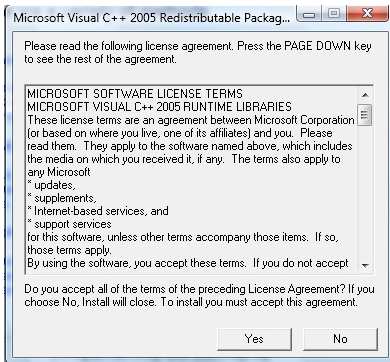
SongFrame will begin the installation. There are a few Getting Started screens you'll see as you wait. Don't worry if you can't read them fast enough - all the information on them is contained in the User Guide.



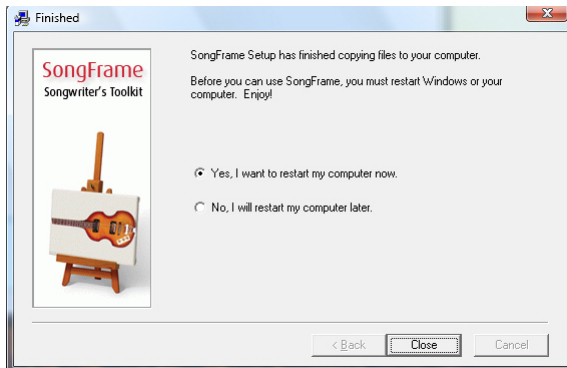
The installer will check if your system has Adobe AIR installed on it - if not it will take you through the installation process for that. If you already have it, you'll see the screen below - click **Close** to continue. You will also be asked if it is OK to install the **LoopBe30 MIDI Loopback driver** from [www.nerds.de/Daniel Schmitt](http://www.nerds.de/Daniel_Schmitt). It is! This is a licensed component of SongFrame.



Last - SongFrame requires the Microsoft Visual C++ Redistributable package installed - click Yes when you reach this screen.



Your installation is now complete - you'll need to **restart your PC** again in order to begin using SongFrame.



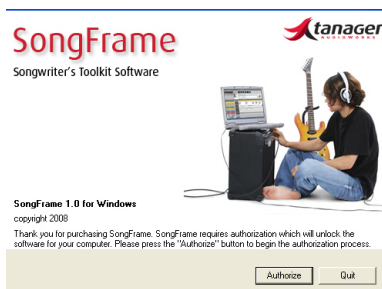
Step 3 - Authorizing SongFrame

In addition to the serial number provided for SongFrame, we also require the product to be registered and authorized. We assume you have a computer you primarily use to record, as well as a work laptop you may live on and travel with, and you'd probably like to use SongFrame on more than one computer. The extra activation is for the 99% of you who have had an "Error reading Drive C" weekend repair job, after which you discover most of your re-installed music software requires you to call and EMAIL endlessly for the privilege of using what you already bought.

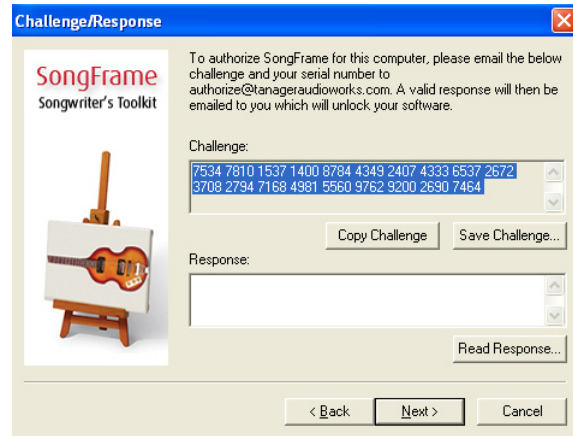
If you run out of activations - fret not - call us and we'll reset the count once we determine that the your serial number is OK.

Authorization Process

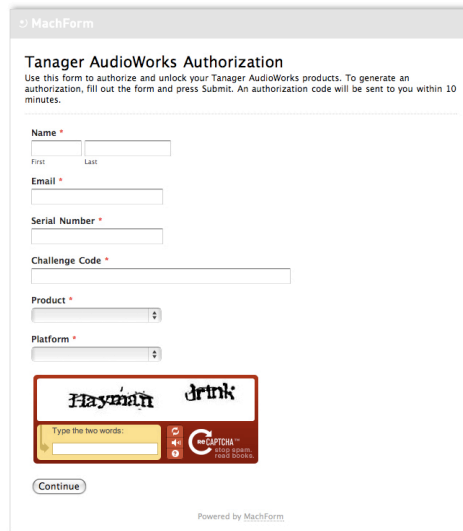
When you first run SongFrame, you'll see this screen:



Click the **Authorize** button to continue. SongFrame will then display the Challenge/Response screen shown below:



A unique code for your specific computer and SongFrame serial number is created and displayed in the Challenge box. Click on **Copy Challenge**. Open your web browser and go to <http://song.tanageraudioworks.com/authorize.html>. Fill out the registration and authorization form.



You should have received your serial number in an EMAIL minutes after your purchase. Paste the challenge code in the box on the form.

Note - if you have difficulty reading the two security words at the bottom of the form, click the loop icon to the right of the text entry box - you'll receive new words.

Once you submit the form, you'll receive an EMAIL in minutes with your **Response Code**. Paste it into the box on the SongFrame Authorization screen and click **Next**. SongFrame will unlock. You should never have to repeat this process again on this computer - even if you uninstall and re-install SongFrame.

Setting Up SongFrame

Once SongFrame has been installed and the application started, the "setup" steps are to setup Audio and MIDI (and your VST instruments if you plan on using these.) Once those are setup (and unless they are changed)

SongFrame will remember them for now on (so you won't have to worry about them again.) After the hardware and sounds are configured, the next step will be to assign some Song Settings (song key, tempo, time signature, etc.) Finally - drag an empty SongBit into the Song Structure pane to begin. If you skip this step, SongFrame will yell at you and tell you that its a requirement to begin writing your masterpiece! If you actually click on the Help link in SongFrame when you first load it up, you can watch a quick movie about how to get started songwriting using the product.

Using Your 4Front Piano and EZ Drummer Lite VST's

4Front VST Instruments (VSTi's)

SongFrame installs 4 free VST Instruments during its installation - the 4Front Piano, EPiano, Rhodes Piano and Bass. (Some of you may want to use the MIDI Track as a Bass Composer, so this is why we supply that last one.) First, you need to be sure SongFrame knows where to find your VST Instruments. In the Setup -> MIDI and VST Setup -> VST Setup tab, click the Add... button and type in the path where your VSTi's are stored. We installed the 4Front VSTi's in **C:\Program Files\SongFrame\VST**, so type in that path. To use them, go to the **Setup -> MIDI and VST Setup -> Chord Track** tab or **Melody/MIDI Track** tab and checking the "Use VST Instrument?" checkbox. Click the "Plug-In" drop down menu - find the 4Front VSTi you want to use. We set the chord track to use MIDI Channel 2 and the Melody/MIDI track to use Channel 1 by default, but you can change channels here if the VSTi you want to use requires a specific setting. These plug-in's have no settings, but if you like what you hear you should consider purchasing the full 4Front TruePianos product at <http://www.truepianos.com/>.

Note - SongFrame provides a tool to "spread" the sound of the chord notes in time for each chord played. This is particularly handy if you are using a Guitar VSTi and want the chords to sound like strums. Use the Note Spread By control under Setup -> Chord Playback Settings. The numbers you see there are actually Ticks (fractions of a beat) - where one tick in SongFrame is 1/960th of a beat.

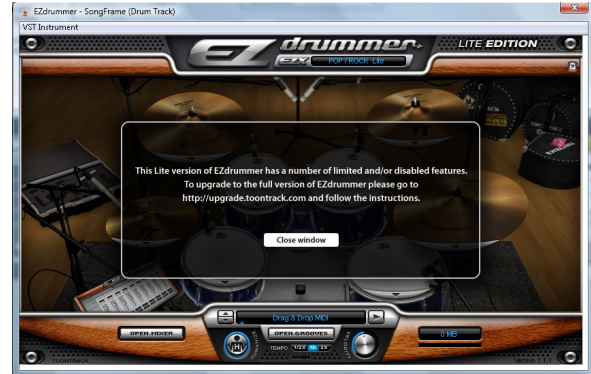
EZ Drummer Lite

We provided a serial number to install ToonTrack's EZ Drummer Lite. This product is not installed along with SongFrame - you'll need to follow the installation instructions below for that product separately. To start, log on to ToonTrack's website at <http://www.toontrack.com/>.

- Create a user account by clicking the New Account link in the upper right.
- Log in with your new account credentials, then click on the Register Products button.
- Click on Register New Product and register your EZ Drummer Lite serial number.
- Scroll to EZ Drummer Lite and choose which version you want to download.
- After installing, load EZ Drummer Lite in SongFrame by going to the Setup -> MIDI and VST Setup -> Drum/Click Track tab and checking the "Use VST Instrument?" checkbox. Click the "Plug-In" drop down menu - find EZ Drummer Lite in the list. Always use MIDI Channel 10 for drum plug-ins. It should already be set for you.
- Go to the Track Controls area to the left of the Drum Track and click on the VST Front Panel icon that appears there now .
- EZ Lite requires an authorization step - make sure to do that first. On

the ToonTrack website - click on the My Products page and follow the steps there.

Once you are all authorized and ready to go, every time you click the SongFrame icon the front panel of EZ Lite will appear. There will always be a message telling you that this version is a Lite version, and you'll need to click on the Close Window button. EZ Lite will then begin loading up its drum set sounds - you can "X" out of the front panel at any time now. The VSTi continues to run in the background, and you can return to the front panel any time by clicking the VST front panel icon in SongFrame.



EZ Drummer is such a cool tool - if you use DAW recording software try the "Open Grooves" button. You can find MIDI loops there that you can drag directly to you DAW MIDI Tracks and loop them. The Mixer function allows you to control the individual drum sounds in the kits provided in Lite. The Lite version contains 2 drum kits - change them by clicking on the little arrow at the bottom of each drum head and looking on the bottom of the menu that pops up. Help is available by clicking the "?" icon in the upper right.

The entire manual for SongFrame is built into the product via the Help menu and contains a pile of useful information about using SongFrame including animations and other tools to make you proficient in using the product. Please make use of it!

You can also download the complete User Guide at: http://www.tanageraudioworks.com/Datasheets/SongFrame_Users_Guide.pdf

There are several training videos available to get you up and running quickly. Find them near the bottom of the SongFrame Product Page under the heading "SongFrame University" at: <http://www.tanageraudioworks.com/Products/SongFrame/>.

Technical support is available via EMAIL at: support@tanageraudioworks.com or just call us on 888-SongWorks (888-766-4967) or direct at 973-895-1874 Ext 2.

Be sure to download the **SongFrame Troubleshooting Guide** available at: http://www.tanageraudioworks.com/Datasheets/SongFrame_Troubleshooting_Guide.pdf. We keep this up to date with useful information to make sure your SongFrame is up and running.

That's all folks - enjoy the product and let us know what you'd like to see added via the User Community at: <http://song.tanageraudioworks.com/groups/community>

SongFrame Songwriter's Toolkit Software Installation Guide for Mac OS X - Download Version

Welcome to the SongFrame Songwriter's Toolkit for Mac OS X Download Version Installation Guide. This guide contains all the information you'll need to get up and running quickly with SongFrame Mac.

Minimum Computer Requirements

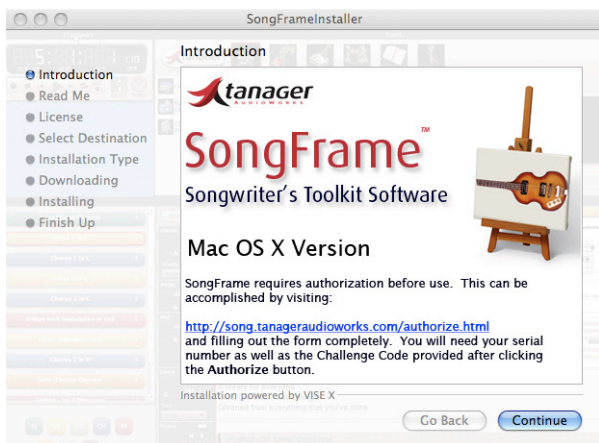
- PowerPC G4 1.8GHz or faster processor or Intel Core Duo 1.33GHz or faster processor
- Mac OS X v10.6 or later
- 512MB of RAM (1GB recommended)
- 1024 by 768 resolution display - actually the bigger the display, the better experience you'll have with SongFrame.
- Audio input/output device (SongFrame will work with an internal sound card or external audio interface.)
- MIDI Input and Output device OR AU Plug-in Instruments.

Installing SongFrame

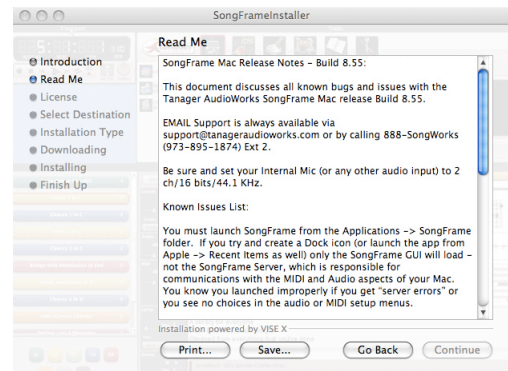
When you click on the provided link, a compressed file called **Song-FrameInstaller.tar.gz** will be downloaded to your computer. Double click on this file in the Downloads folder and the SongFrameInstaller.app file will be uncompressed inside your Downloads folder. Double click this file to begin the installation process. You will see a warning - it's OK to click **Open** at this point.



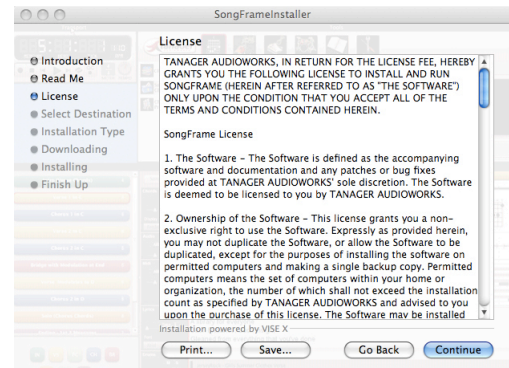
Next - you will see the SongFrame splash screen:



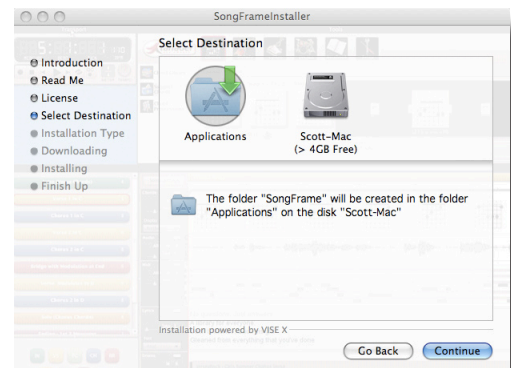
Click **Continue**. The next screen contains some important release notes - please scroll down and review these before continuing. After scrolling all the way down, you'll be able to click **Continue**.



You must read and agree to the license agreement on the next page to continue with the installation.



Next, choose the location to install your SongFrame. The default selection is the **Applications** folder.

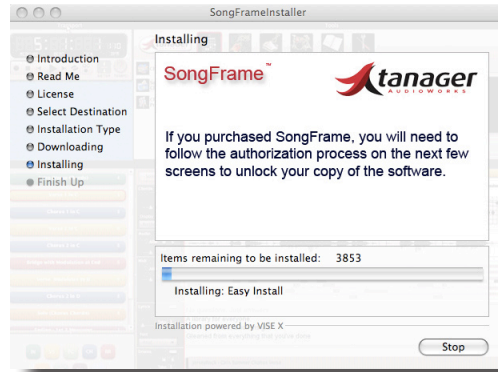
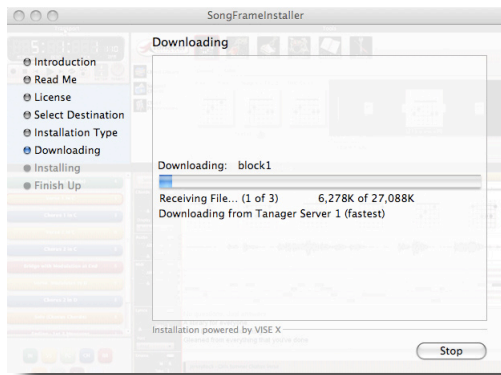


After another information screen, the installer will begin downloading

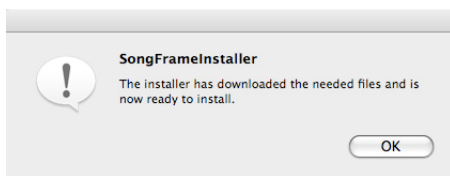
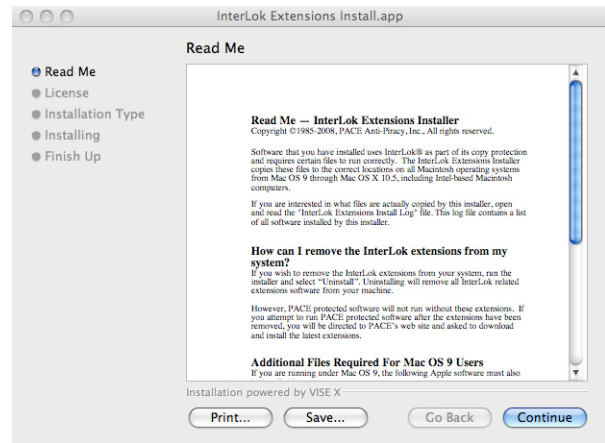
the files required to finish the installation. This process will take a few minutes since there is a total of around 140MB of info to be downloaded. Be sure your internet connection speed is adequate.



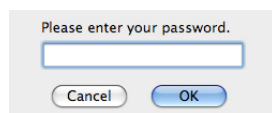
File download will proceed for a few minutes until all server-based files have been downloaded to your Mac.



The last step of the process is the installation of the **Pace Interlok Extensions** - another required utility for SongFrame to operate.

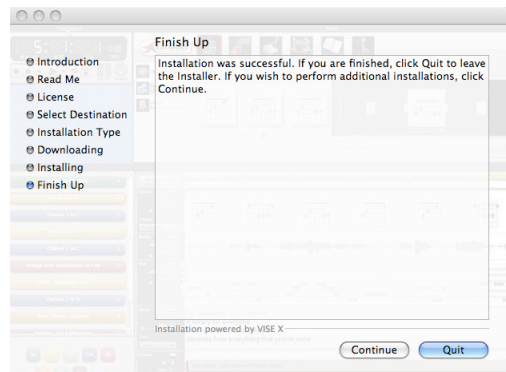


You will be prompted for a "password" next - use the **Serial Number** you were provided when you purchased SongFrame here.



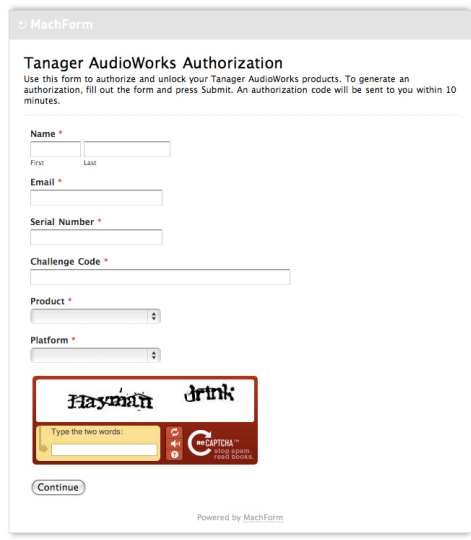
Next, the installation of the program files begins. Once the main SongFrame files are downloaded, the installer looks for an existing installation of the **Adobe AIR Framework** and installs it if not found.

When this finishes, you'll be presented with 2 "Finished" screens - the first is the completion of the Pace installation and the second completes the SongFrame installation itself.



Authorizing and Running SongFrame

Please make sure to run SongFrame from the Applications -> Song-Frame folder. If you try and create a Dock icon and launch from there - the program will not run properly. When you first load SongFrame, you will need to complete an authorization step. Click on the **Authorize** button when the application first loads, and then click the **Copy Challenge** button. In your web browser, go to our Authorization Form at <http://song.tanageraudioworks.com/authorize.html>. Fill the form out - paste the Challenge Code in the appropriate box and enter the serial number you received when you purchased SongFrame.



The screenshot shows a web browser window titled "MachForm" displaying the "Tanager AudioWorks Authorization" form. The form includes fields for Name (First and Last), Email, Serial Number, Challenge Code, Product, and Platform. At the bottom, there is a security challenge with the words "Mayonnaise" and "Drink" and a CAPTCHA. A "Continue" button is located at the bottom left of the form.

Note - if you have difficulty reading the two security words at the bottom of the form, click the loop icon to the right of the text entry box - you'll receive new words.

Once you submit the form, you'll receive an EMAIL in minutes with your **Response Code**. Paste it into the box on the SongFrame Authorization screen and click **Next**. SongFrame will unlock. You should never have to repeat this process again on this computer - even if you uninstall and re-install SongFrame.

Please consult the PDF manual (installed in your SongFrame folder under Applications) or built-in Flash Help to get started writing with SongFrame.

The entire manual for SongFrame is built into the product via the Help menu and contains a pile of useful information about using SongFrame including animations and other tools to make you proficient in using the product. Please make use of it!

You can also download the complete User Guide at: http://www.tanageraudioworks.com/Datasheets/SongFrame_Users_Guide.pdf

There are several training videos available to get you up and running quickly. Find them on our website under the Training tab on the home page.

Technical support is available via EMAIL at: support@tanageraudioworks.com.

Be sure to download the **SongFrame Troubleshooting Guide** available at: http://www.tanageraudioworks.com/Datasheets/SongFrame_Mac_Troubleshooting_Guide.pdf. We keep this up to date with useful information to make sure your SongFrame is up and running.

That's all folks - enjoy the product and let us know what you'd like to see added via the User Forums available on bottom right of the home page after logging in.